

TRANS CAN PIPE

ADS Canada provides expert knowledge and innovative product solutions proven in a wide range of field drainage applications. Our HDPE pipe delivers superior value while providing physical strength and structural design that just cannot be matched by traditional pipe methods.

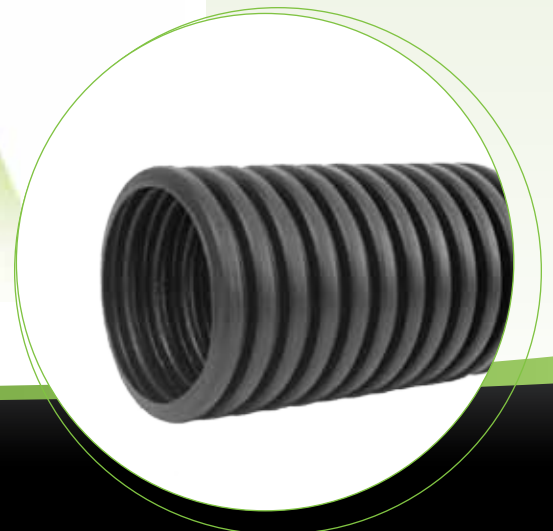
ENGINEERED FOR OPTIMAL PERFORMANCE

Trans Can pipe is perfect for culvert applications; cross, slope or edge drains and highway drainage. Other uses include sports playing fields, golf course and parking lot drainage, pond overflow, pond equalizer, dunes, waterways and terracing.

FEATURES & BENEFITS:

- Adaptable to soil-tight joint performance requirements - gasketed or non-gasketed split coupler and internal and external snap couplers are available.
- Available in 30.5 m (100') coil lengths for 100-150 mm (4"-6") diameter pipe and 6.1 m (20') lengths for 200 mm (8") diameter pipe. Longer lengths result in fewer joints - pipe can be cut easily to the desired length in the field.
- Easy-to-handle, safe, lightweight pipe requires less labor and equipment for faster installation and reduced costs.
- CL-625 and HS-25 (Highway traffic loads) rated with a minimum of 300 mm (12") of cover.
- Provides superior resistance to chemicals, road salts, motor oil and gasoline - will not rust, deteriorate or crumble.
- Withstands repeated freeze/thaw cycles and continuous sub-zero temperatures.

ADS Canada Service: ADS Canada representatives are committed to providing you with the answers to all your questions, including specifications, and installation and more.



TRANS CAN PIPE SPECIFICATIONS

SCOPE

This specification describes 100-200 mm (4"-8") ADS Canada Trans Can pipe for use in non-pressure drainage applications.

PIPE REQUIREMENTS

ADS Canada Trans Can pipe shall have annular interior and exterior corrugations.

100-200 mm (4"-8") shall meet BNQ 3624-110, Category R-300 type 1 and 2 & AASHTO M252, Type C.

JOINT PERFORMANCE

Pipe shall be joined with internal or external couplers, or coupling bands covering at least two full corrugations on each end of the pipe.

FITTINGS

Fittings shall conform to BNQ 3624-110.

MATERIAL PROPERTIES

Pipe and fitting material shall be high density polyethylene meeting classification 424420C for 100-200 mm (4"-8") diameters.

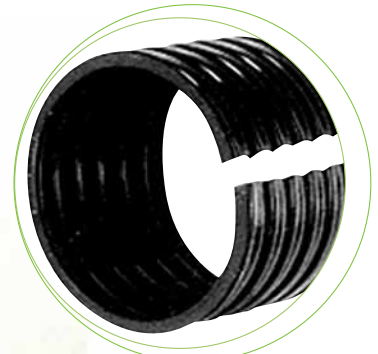
INSTALLATION

Installation shall be in accordance with BNQ 1809-300 with the exception that minimum cover in trafficked areas shall be .3 m (1 foot).

PIPE DIMENSIONS

Nominal Pipe I.D., mm (in.)	100 (4)	150 (6)	200 (8)
Approx. Pipe O.D., mm (in.)	119 (4.7)	178 (7.0)	239 (9.4)

All diameters are available in plain, perforated and perforated with wrap.



200 mm (8") Split Band Coupler



100-200 mm (4-8")
External Snap Coupler



100-200 mm (4-8")
Internal Snap Coupler